

THE CALLIOPE



Massachusetts Women of Today
www.mawt.org

From The President

By Louise Orum

Can you believe the end of the first quarter is here already! Time really does fly! I have had a busy first quarter. I have made a chapter visit to Easton, Bellingham and Chelmsford. Thank you for allowing me to attend! It's always fun meeting members from other chapters. By this time, all training information/materials have been provided to the new State Board and local chapters. We had our training/e-board meeting in June.

Future E-board meetings have been set for October 7th and January 12th. Place/time TBD. Our February Winter Convention is tentatively scheduled for February 6th -7th. Place/time TBD.

My theme this year is **"Women of Today Give From the Heart"**. I have developed a beautiful pin for my **"Heart of Gold"** award. ******Please submit forms to me by October 24th****** (see page 19)

I am looking forward to our **November 1st State Meeting**. The meeting will be hosted by Greater Attleboro Women of Today at the American Legion Post #217 John Edward Mc Neill post 44 South Street (Route 1A) Plainville, MA 02762. Registration/credentials @ 9:30 Meeting commences at 10:00 AM. **The cost will be \$15 prepaid with registration form by October 20th, 2008. (See registration form on page 16)**

If anyone would like to be on the agenda, please let me know. Remember, this meeting is for everyone! We want to hear your voice. You do not have to be on the state or local board to attend. We will have Heart Bucks available this

INSIDE THIS ISSUE

From the President	1
From the National President	2
National Staff Information	10, 12
Officer News	2,4-6, 11, 13
Chapter News	3, 7, 11
Calendar of Events	4
Winter Convention Information	6
ID Competitions	8-9
STEP Challenge	10
May State Meeting Minutes	14-18
November Meeting Registration	19
Heart Bucks Form	20
Heart of Gold Award Form	21

year. ****Don't forget to complete your Heart Buck form-I have some very nice items for you to bid on**** (see page 18)

I had a lot of fun at our National Year-end Convention in Minnesota! I could not have done it without my guardian angels (thanks again to Marcia Allison and Kathy Simmons for taking me under their wing -this was only my 2nd time flying 1st time being way back in 1999). We brought back lots of awards and pictures.

Please see the attached list for our Massachusetts awards. Congratulations go out to our outstanding members!

I have also decided to take on a National position this year. Janet had an opening still for the National Personal Enrichment Program Manager. It was really right up my alley since I have been State ID VP and Local ID VP numerous times since joining Women of Today,

Bye for now! Hope to see everyone at the November State Meeting!



Louise Orum

Massachusetts Women of Today President

From the National President

By President Janet

WOW – the first quarter is behind us – where did the time go?

By now – the state officers and the national officer they serve under should have had contact with each other. The national officers are here to assist and help with training in any way they can.

I have asked each chapter to sign at least one new member this year – one more than the beginning membership count at the beginning of the year. We need to make an extra effort this year and ask as many women as you can, and don't forget your family members. I know, I know, some of you say "I don't want them with me", then sign them up in another chapter – or start a new chapter in your area. The membership team, Kim Troutt, Membership Vice President, Extensions Director Deb Stein, and Public Relations Director Penny Bussel would be more than happy to help make my Dream into the Vision that will bring new Stars to our organization.

I am looking forward to seeing everyone at midyear in Omaha, Nebraska the first weekend in October.

Here's to peaceful Dreams, energetic Vision, and bright new Stars.

Janet Esper, President 2008 – 2009

"New Dreams ~ New Vision ~ New Stars"

Esperj@aol.com

Angels dream beautiful visions and illuminate the power of our vision.



Individual Development Update

By Amy Morrison

I wanted to touch base quickly with the executive board and let you know that the deadline is sneaking up for the ID Fast Start. Please review the documents that were emailed to you and forward the completed forms to me via email or mail (drop offs are welcome too).

For all ID VPs on the local level and chapter presidents,
Please forward all Q1 certifications for PE/FOW/Chaplain and STEP.
I will need to submit them on to national.

I appreciate all your efforts. I look forward to hearing from you.

If you have any questions or need ideas for Individual Development, do not hesitate to contact me. I will follow up with all chapters by the end of the month.

Summer News from Chelmsford

By Kathy Simmons, Chelmsford President

Q1 was very busy with the completion of a total revision and ratification of our governing documents and proposed budget. We finished and presented 18 quilts to Project Linus at our June meeting.

Funds were donated to MSPCC, Live Smart, MSPCA and allocated to our Project Linus quilts committee for materials. We also purchased a picnic table for Red Wing Farm (a public recreation area in Chelmsford). The table has a plaque on it declaring the donation came from the Chelmsford Women of Today.

At the end of June, we held our Banquet with members bringing appetizers and desserts while the entrée was catered. Our new officers were installed and our all our members participated in a re-dedication candlelight ceremony. Marcia Allison was awarded Honorary Membership in the Chelmsford Women of Today.

Congratulations to our National award recipients: Presidential pins- Dee Miller and Jerry Sullivan, Outstanding Local Officer- Kathy Simmons, Outstanding State Officer - Marcia Allison.

Normally we take the summer off but this year we will hold our Strawberry Festival hosted by the Curry's in July and members requested we hold an August social/meeting to jump start our new year.



Hello from the Easton Chapter

By Donna Bishop, Easton President

I am happy to once again this year be serving as Easton Woman of Today's President for the 2008-2009 year.

I have been a member of EWOT since February, 2005. I was more of a bystander that first year, my second year I served as co-vp for Ways and Means as well as Chaplain. I also co-chaired the Holiday Breakfast and as I did last year I co-chaired our Spring Dance. I was last year's President and am very happy to continue on in this role

Easton had a lovely Social in June. We will be providing freeze pops at the Children's races in August, as we were rained out for our planned date in July. In August, we will once again have an ice cream social to celebrate "Friendship Day". Ice Cream has become somewhat of our traditional "Friendship Day" Event. We will be providing Snacks at an up-coming concert at Frothingham Park. This is always a popular family event.

We are looking forward to a busy fall schedule. We will be at the NRT Fair with our Duck Pond in late September. We have a tentative plan of a shopping event to be held at a local hall, details to follow. I hope everyone has enjoyed their summer and has a great fall.

Calendar of Events: September to December 2008

By President Louise

Black lettering pertains to every one
 Red lettering pertains to Chapter Presidents
 Green lettering pertains to Membership
 Purple lettering pertains to Programming



September 2008

Emphasis: Membership, Public Relations, MSPCC, Website

- 1 New member adds and renewals due to Julie Hutchinson
- 1 National Mid Year Effective Writing due to national PE Program Manager
- 1 National Mid Year Project Recognition entries due to national Programming VP
- 15 Friendship Day forms due to national
- 15 Shout Out with Pride forms due to national
- 17-22 Women of Today Week

October 2008

Emphasis: Buckets of Sunshine, Chaplain

- 1 New member adds and renewals due to Julie Hutchinson
- 1 Donation summary Report due to National
- National Mid-Year Convention
- 28 Women of Today Week certifications due to PR Director
- 31 PE/ID Certification Lists due to national counterpart
- 31 End of Second Quarter

November 2008

Emphasis: Focus on Women, Leadership Course

- 1 Fall State Meeting
- 1 New member adds and renewals due to Julie Hutchinson
- 1 Public Relations Activity Form due to national
- 10 Fall State Meeting/Effective Writing & Speaking Competitions to be held
- 15 Calliope article due to Becky Fleming
- 15 SPACE forms due to Louise Orum

December 2008

Emphasis: Extensions, Membership

- 1 New member adds and renewals due to Julie Hutchinson
- 1 Make a Difference Day forms due to National

Help the Historian

By Paula Hickey

Please help me with the scrapbook by submitting any newsworthy pictures or articles regarding your chapter! You can email me at pjhic@aol.com or mail to me at 22 Green Dr Attleboro, MA 02703!

2008 Year End National Convention Awards

By: President Louise

Please join us in congratulating the following award recipients!

Outstanding State Officers

- ✓ Marcia Allison
- ✓ Amy Morrison
- ✓ Walter Woodard

Outstanding Local Officers

- ✓ Kathy Simmons
- ✓ Tina Schwab

Presidential Pins

- ✓ Louise Orum
- ✓ Elaine Tallini
- ✓ Dee Miller
- ✓ Jerry Sullivan

All American Chapter

- ✓ Greater Attleboro

Chapters with 100% retention 2nd qtr

- ✓ Chelmsford
- ✓ Norton

Chapters with 100% retention 3rd qtr

- ✓ Bellingham
- ✓ Chelmsford
- ✓ Georgetown
- ✓ Norton

Chapters with 100% retention 4th qtr

- ✓ Chelmsford

Chapters with growth 2nd qtr

- ✓ Norton

Chapters with growth 3rd qtr

- ✓ Norton
- ✓ Greater Attleboro

Chapters with growth 4th qtr

- ✓ Mansfield

Chapters with 100% retention year-end

- ✓ Chelmsford

Sue Beattie (Bellingham) received 1st place for submitting a project report for winter convention

Marcia Allison received 3rd qtr outstanding Program Manager

Amy Morrison received outstanding State Contact for the 3rd qtr for Personal Enrichment/ID



Newsletter Information

By Becky Fleming

Please note that the next newsletter deadline is November 15, 2008. Please submit your articles, suggestions or comments to: becky496@comcast.net

I look forward to hearing from you!

Winter Convention: February 6 & 7, 2009 Holiday Inn, Marlboro, MA



By Eileen Murray. Chairman Winter State Meeting

Our annual winter meeting in February is in the planning stages. I know Women of Today work hard at home in the office and in their communities. We need some pampering!!! The theme for our Friday night party revolves around taking care of ourselves, We all know if we don't do it who will? We will be having a Pajama Party and are working on having a host of fun pampering services for all!! If you or someone you know is willing to supply some personal services let me know.

Examples: chair massage, pedicures, mini facials, hand treatments etc.

We also would like to put together goodie bags of personal items for our attendees. Please call or e-mail me if you can help. The Saturday business meeting is always informative and we get to visit with the women from around the state. More info will be available soon. Hope to see you all at the Nov meeting where we will have more details.

Eileen Murray
508-339-2921
Eileen Murray@comcast.net

From the Secretary

By Kathy Simmons

I'm sure you are enjoying your summer and I am not trying to rush it, but we are now into the 2nd Quarter already!

The minutes from the May meeting are attached to the newsletter, please read and let me know if you have any questions, additions or corrections so they can be amended before being presented for acceptance at the November meeting

Secretaries, please put me on your mailing list so that I may receive your monthly meeting minutes! There will be a gift at the November State Meeting to the Chapter Secretary that sends me each of your monthly minutes.

Remember, you are recording your Chapters' History so be sure to continue...

Editor's Note

By Becky Fleming

In the June issue, we incorrectly reported the following information:

Massachusetts donated \$540, 824.24 and had volunteer hours of 40,759.

These numbers are the numbers for *all of the US Women of Today*.

We regret any inconvenience that this error has caused.

News from Norton

By Marie Tucker

We meet the second Tuesday of each month at my office. Everyone is welcome to attend our meetings, please call to confirm location and programs. We will be working on having a short program at each of our meetings.

Here is our schedule of upcoming programs:

MONTH	Ways & Means	Community Development	Membership
SEPTEMBER			
OCTOBER		Halloween Parade Float	
NOVEMBER	Internal Auction		<i>Membership Initiative</i>
DECEMBER	Holiday Letters		
	Gift Wrap: LL Bean Borders		



Mansfield Women of Today News

By Mary Joyce & Lisa Ricker, Mansfield Co-Presidents

Mansfield Women of Today has had a busy summer. In July, we sponsored a booth at the Mansfield Downtown Business Association's Family Fun Night and celebrated the upcoming year at our annual Tropical GM. In August we sponsored Concert on the Common where we ran an activity for the kids and provided refreshments and we had our annual Salad Supper.

Our activities for the coming year include our two big Ways and Means projects: Our Second Holiday House Tour on Sunday, December 7th and a Ladies Fashion Show in the Spring. We will also be co-sponsoring One Book One Community again this year which was started in Mansfield last year by two of our members. Other community development projects include: a blood drive, a clothing drive, an event for Mansfield's Council on Aging, a talk on eating disorders at the middle school, hot and cold holiday meals, Christmas is for Kids, Adopt a Family and a day of beauty for women residing in local shelters.

We look forward to a busy and exciting year.

2008–2009 Individual Development Competitions/Deadlines (United States Women of Today and Mass Women of Today)

PERSONAL ENRICHMENT

Effective Speaking:

National Year End Competition only

Topic: **Where do you envision yourself in 5 years? How will you attain that dream?**

Guidelines: 4 – 6 minutes; submit stat sheet; requires attendance at Year–end National Convention

Cost: \$5.00 – payable to USWT; reimbursable by MAWT

Deadline: **May 1, 2009 postmark**

Submit to National PE PM (Louise Orum 23C Benefit Street, Attleboro, MA 02703 508–369–7207 Iro2@netzero.net)

Notify State ID PM of members entering competition

Massachusetts State Competition only

Topic: **What makes you thankful everyday?**

Guidelines: 4 – 6 minutes; submit stat sheet; requires attendance at May State Meeting

Cost: \$5.00 – payable to USWT; reimbursable by MAWT

Deadline: **May 1, 2009 postmark**

Please notify State ID PM (Amy Morrison 136 Mary Lane Bridgewater, MA 02324 508–697–1677 alanglais1020@yahoo.com)

Effective Writing:

National Mid–Year Competition

Topic: **Who is the STAR in your life?**

Guidelines: 600 – 800 words, typed, single sided, double spaced, 5 copies with stat sheet

Does not require attendance at Mid Year meeting

Cost: \$5.00 payable to USWT; reimbursable by MAWT

Deadline: **September 1, 2008 postmark**

Submit to National PE PM (Louise Orum 23C Benefit Street, Attleboro, MA 02703 508–369–7207 Iro2@netzero.net)

Notify State ID PM of members entering competition

National Year End Competition

Topic: **Who is the STAR in your life?**

Guidelines: 600 – 800 words, typed, single sided, double spaced, 5 copies with stat sheet

Does not require attendance at National Convention

Cost: \$5.00 payable to USWT; reimbursable by MAWT

Deadline: **May 1, 2009 postmark**

Submit to National PE PM (Louise Orum 23C Benefit Street, Attleboro, MA 02703 508–369–7207 Iro2@netzero.net)

Notify State ID PM of members entering competition

Massachusetts State Competition

Topic: **How do you show your heart in all you do?**

Guidelines: 600 – 800 words, typed, single sided, double spaced, 5 copies with stat sheet

Does not require attendance at November State meeting

Cost: \$5.00 payable to USWT; reimbursable by MAWT

Deadline: **September 1, 2008 postmark**

Submit to State ID PM (Amy Morrison 136 Mary Lane Bridgewater, MA 02324 508–697–1677 alanglais1020@yahoo.com)

S.T.E.P.**NATIONAL YEAR END COMPETITION****Step II: Resume' only – see USWT forms**

Does not require attendance at National Convention

Guidelines: 4 copies of each resume

Cost: \$5.00 payable to USWT; reimbursable by MWOT

Deadline: **May 1, 2009 postmark**

Submit to National STEP PM (Vickie Vitale 131 Gables Way Jackson, NJ 08527 732-252-6862 vvitale@optonline.net)

Notify State ID PM (Amy Morrison 136 Mary Lane Bridgewater, MA 02324 508-697-1677 alanglais1020@yahoo.com) of members entering competition

STEP III – Resume' and interview

Requires attendance at National Year End Convention

Cost: \$5.00 payable to USWT, reimbursable by MWOT

Deadline: **May 1, 2009 postmark**

Submit to National STEP PM (Vickie Vitale 131 Gables Way Jackson, NJ 08527 732-252-6862 vvitale@optonline.net)

Notify State ID PM (Amy Morrison 136 Mary Lane Bridgewater, MA 02324 508-697-1677 alanglais1020@yahoo.com) of members entering competition

FOCUS ON WOMEN**National Year End Competition**

Essay Topic: **I Found My Focus** (about a turning point in your life)

Guidelines: 800 – 1200 words; typed, double spaced; send 4 copies with 4 stat sheets – each copy in a binder or folder

Does not require attendance at National Convention

Cost: \$5.00 payable to USWT; reimbursable by MWOT

Deadline: **May 1, 2009 postmark**

Submit to National FOW/Chaplain PM (Marcia Allison 189 Littleton Rd Unit 48 Chelmsford, MA 01824 978-256-3395 randmallison@comcast.net)

Notify State ID PM (Amy Morrison 136 Mary Lane Bridgewater, MA 02324 508-697-1677 alanglais1020@yahoo.com) of members entering competition

CHAPLAIN NEW ** NEW NEW******National Year End Competition**

Essay Topic: **At the Center** (about something that centers your life spiritually)

Guidelines: not to exceed one page: 12pt font; typed, double spaced; send 4 copies

Does not require attendance at National Convention

Cost: \$5.00 payable to USWT; reimbursable by MWOT

Deadline: **May 1, 2009 postmark**

Submit to National FOW/Chaplain PM (Marcia Allison 189 Littleton Rd Unit 48 Chelmsford, MA 01824 978-256-3395 randmallison@comcast.net)

Notify State ID PM of members entering competition

From the Membership VP

By Julie Hutchinson

As we begin our 2nd quarter of the Women of Today calendar, the majority of our chapters are just getting ready to begin their year. The excitement of a new year is sure to be infectious as a new leadership team comes forth and members join together again after the summer break.

Each year we set our hopes and goals of increasing our membership base by at least one by recruiting new members and retaining our existing members. Our core members are an essential part of the organization and we must all do our best to keep them involved and appreciated. As I was going through the membership material, I ran across the following tidbit of advice and wanted to share it with all of the chapters.

There is no sure-fire formula for retaining every person that joins your chapter as an active member, but here are a few suggestions:

R is for RIDES that you will offer to the meeting.

E is for the EXPLAINING – the how, what, where and when for all of your projects about which she knows little or nothing and which even a good orientation program cannot possibly cover.

T is for the TIME you will spend getting to know her better, what she does and what she likes, her talents and interests, and for showing her how and where she can best fit in with your chapter.

E is for the ENERGETIC, ENTHUSIASTIC, EARNEST, EFFICIENT ENDEAVOR that you will enjoy in your efforts to make her an active member.

N is for her NAME that you must remember, finding out how it is spelled and pronounced. Use of nametags at every meeting will help both of you.

T is for the TALKING you do after the meetings, always including her in your conversations.

I is for the INTEREST you should show in her family and friends and the work she is doing to help your chapter.

O is for the ORIENTATION program set up by your board or membership chairman, which you and the new members should attend together. New members need to know and experienced members need to be reminded, what kind of an organization they belong to.

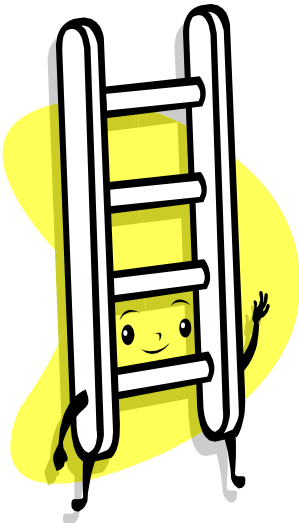
N is for the NEED that you have for each other. New members need your friendly conversation, your knowledge of how things are done and your help and understanding in everything they do. You need new members to stimulate and increase your interest, to give you a different viewpoint on an old problem, and to renew your understanding by having to teach someone else.

Put these suggestions together and they spell **RETENTION**. There is no better way to retain your own interest in this organization than by helping someone else become an active member.



Strong Members Inspire Leadership Excellence

Julie Hutchinson, Membership VP



S.T.E.P _____
 LADDER _____
 CHALLENGE _____

TOP STEP #4 = 31 OR MORE CERTS

STEP #3 = 21 TO 30 CERTS

STEP #2 = 11 TO 20 CERTS

STEP #1 = 5 TO 10 CERTS

GREETINGS AND CALLING ALL STATES AND CHAPTERS OF THE WOMEN OF TODAY TO “S.T.E.P. UP TO” THE ‘S.T.E.P. LADDER CHALLENGE’ FOR THE 1ST AND 2ND QUARTERS OF THE 2008-2009 YEAR!

Each ‘STEP’ on the ladder represents different incentives for the chapters, and the state with the *most* certifications (in any/all areas) will be recognized at Mid-Year with a special gift. All members will be recognized at Mid-Year also.

All forms for STEP area I, II, III are on the USWT website. Please have chapter members fill out their forms, especially new members within their first 90 days, and forward to their chapter director or state contact. Don’t forget to sign new members, bring in your friends and family, or people you meet in your communities!

State Program Managers can send me “either” their filled out **certification summary sheets** or **email me your state chapter lists** by the end of each quarter. Please include chapter names/state and dates certified, in addition to STEP I, II, III areas.

Deadline for all certifications will be no later than September 13th in order to be recognized at Mid-Year.

Have fun with the challenge and let’s see how far “**up the ladder**” you can go!!!

Vickie Vitale
 S.T.E.P. Program Mgr. USWT
 131 Gables Way, Jackson NJ 08527
 email: vvitale@optonline.net

Greetings from Greater Attleboro

By Elaine Tallini

My name is Elaine Tallini and I am happy to have the opportunity to be Greater Attleboro's Women of Today President for the 2008–2009 year.

I have been a member of Greater Attleboro since March 2004. I've held a board position ever since joining. My first one being within a few months of becoming a member. I've also chaired/co-chaired/participated in numerous events.

Greater Attleboro has been very busy for the start of the new Women of Today year beginning with the installation of our new board! Followed by our first Car Seat Safety Program with Professional Firefighters of Attleboro with about 24 car seats inspected along with a free blood pressure check-up. We then had our annual Yard Sale with all proceeds going to MSPCC. And we also held our annual Blood Drive in coordination with the American Red Cross with over 66 people showing up to donate. We also held a membership drive and am happy to announce that we have a new member in our group. We are looking forward to a busy fall schedule. Our co-membership vps are doing a great job making sure that whatever events we have and when ever we have our general meetings that membership brochures are available.

We had a team for the Relay for Life in June and our Annual Family Brunch and ID Summer stroll in July. In August we had our Annual PJ party. September will bring an Ice Cream Social/General Meeting and Beautiful Baby contest.

Our goals this year are to have many exciting programs each month, e-board meetings to brainstorm what more we can do for the community, retaining and increase our membership and also to have FUN!!!

Focus on You

By Marcia Allison, National FOW/Chaplain Program Manager



I'm so pleased to be serving as your USWT Focus on Women /Chaplain Program Manager. We're looking at an exciting year! As Chaplain, I would like to hear about anyone that you feel deserves a card or note. I will gladly acknowledge happy occasions like milestone birthdays & anniversaries, and special accomplishments, as well as concerns like illnesses, surgeries and bereavements. Please keep me informed!

By now, you may have already heard about this area's Fast Start challenge. Everyone who certifies early in both Focus on Women and the Chaplain areas will be recognized at Mid-Year, and will be entered in a special prize drawing. (I can accept certifications up to September 25th.) There will also be similar prize drawings for those certifying during the emphasis months of October & November.

Later in the year, I will have more details for you on the Year-End competitions. There will be the usual Focus on Women Essay Contest; and this year there will be a Poetry Contest for the Chaplain/Spiritual Enrichment area. Start thinking about those now!

If anyone would like me to send a card, if you just have questions or input, or if I can be of any help to your chapters, please feel free to get in touch. I look forward to hearing from you.

In friendship–

Marcia Allison

978–256–3395

randmallison@comcast.net

State Charity Information

By Sue Beattie

When setting up your planned year for 2008/2009, please include at least one or two activities for our state charity, Massachusetts Society for the Prevention of Cruelty to Children.

Some suggestions include: Welcome Home Baby Baskets, a MSPCC project held each October; Back to School Backpacks, a drive to collect back-to-school backpacks filled with school supplies for children in need. MSPCC also collects donations for Halloween and Christmas parties as well as assistance with Mother's Day and Father's Day celebrations. Donations of children's toys, clothing, car seats, arts and crafts and more are needed at MSPCC community centers throughout Massachusetts.

To find out what is needed in your area, call 508-753-2967 for the Worcester area, 508-586-2660 for the Southeast and 978-682-9222 for the Northeast.

Another opportunity to help kids is by shopping at Glad Rags Thrift Store in Westwood and the Lighthouse Thrift Shop in Marblehead. Both shops are staffed entirely by volunteers and all proceeds benefit MSPCC's child abuse and neglect prevention programs.

As always, when your chapter participates in either educational or fundraising efforts for MSPCC, please let me know. This information will be collected throughout the year and used to report what the MA Women of Today can accomplish as a whole.

Do you aspire to be President?

By President Louise

We need a leader for the 2009-2010 WOT year!

Ideally, the incoming president would train with the current president for at least part of the year before they accept the position.

I would like to begin training at the November 1st state meeting.

Please contact me with any questions or concerns.

You will know if it is time for you to step up!

There is no time like the present!



MASSACHUSETTS WOMEN OF TODAY
 STATE MEETING
 CHELMSFORD, MA
 MAY 10, 2008

Call to Order: 10:15 AM

WELCOME First Timers: Chris Palombo welcomed Dee Miller and Alyson Galus

Pledge led by Helen Cloutier

Invocation: Walter Woodard – Happy Mother's Day

Agenda: Amended to move Membership to the top and hold Elections and Installation prior to lunch.

Rules of the Day: Julie Hutchinson

No issues to vote on today.

Attendance: 5 of 7 Chapters represented. Bellingham –3, Chelmsford –11, Greater Attleboro –5, Mansfield –2, Norton –2, Total in attendance 23.

First Timers: 2

Co-Presidents Louise and Elaine extended a big Thank You to Marcia Allison and the Chelmsford Women of Today for hosting this meeting and welcome to all present.

Guests: None

President's report: It feels like we just took the oath as co-Presidents and now we are wrapping up. We enjoyed every moment.' Please send in your new chapter board information in the format provided. Our chapters were very busy this year and we had a great Winter Convention with lots of fun (belly dancing) and National guests. We'll be looking for a chairperson for 2009 soon but first we are looking for a chapter to host the November State Meeting. Louise and Elaine thanked each of their outgoing Board members. Not too late to step up onto the new State Board! How about National? Louise will be our new President for 2008–2009 and is looking forward to a great year!

All Garden Awards given throughout the meeting are listed together with the Quarterly Awards below the meeting minutes

Membership: Chris Palomba. Q 4 was a little rough. Down 15 for the year. We were only down 5 at the end of the third quarter. Year end stats are as follows:

- a. Bellingham – 75% retention Q4. Year end membership @ 15.
- b. Chelmsford – 100% retention Q4 and the full year with growth of 1. Year end membership @ 19
- c. Easton – 86% retention Q4. Year end membership @ 24
- d. Georgetown – 60% retention +1 Q4. Year end membership @ 19
- e. Mansfield – 89% retention + 3 Q4. Year end membership @ 64.
- g. Norton – 29% retention Q4. Year end membership @ 16
- h. Greater Attleboro – 63% retention + 2 Q4. Year end membership @ 29
- i. Base membership– 202. Year end membership –187 (includes 1 'at large'). 38 drops.
 23 new members added.

May State Meeting Minutes continued

Julie Hutchinson will be the new Membership VP.

Re-dedication ceremony: CONGRATULATIONS!!!

10 Year Pins: Becky Fleming, Easton and Simon Curry, Chelmsford

20 Year Pin: Marcia Allison, Chelmsford

Bellingham – Report by Sue Beattie for Joanne. “Spread Your Wings”

March held Muffins with the Easter Bunny and provided Easter Baskets for the elderly and shut-ins. During April, cookies and other pastries were made for the Police and Fire Departments to celebrate Volunteer Week and a Girl’s night out at a Woonsocket theatre was held. In May, flowers donated by Brian’s Florist will be given to the children in the shelter for their moms, a Bake Sale will be held outside of Wal-Mart, a \$500 scholarship recipient will be chosen and will hold the year end Pot Luck Banquet on June 29th to install new officers.

Greater Attleboro Report: by Elaine Tallini – Held Muffins with the Easter Bunny raising a total of \$1,811 in receipts and donations in spite of the rain and snow that day. Donated \$950 to Neighbors Helping Neighbors Fuel Assistance Program and volunteered for the 4th year as Fairy Godmothers helping juniors and seniors select prom gowns and accessories. Upcoming projects include: May– Car Seat Safety Program/ Blood pressure clinic/Membership drive, a yard sale, a Blood Drive with the Red Cross; June – holding our 1st “Tea for Two”, Relay for Life team and hosting a table at the Mansfield Air Race Classic Show. Our year end banquet was held with 25 members attending. Elaine Tallini is the incoming president.

Chelmsford Report – by Helen Cloutier – We’re in the final stages of revising the Constitution, By-Laws and Policies. Updated the chapter brochure, signed a new member giving Chelmsford the status of 100% retention + growth. Held two very successful eBay Seminars with attendees requesting a third, and two Buckets of Sunshine projects for Alternative House (Easter and Mother’s Day), made Linus Quilts and raised over \$700 on our annual Yankee Candle sale. A special thank you to everyone for their support (especially Marcia Allison) during this difficult time.

Easton Report – email, Easton held a Family Skate Day, “A Night at the Chateau” fundraiser and a shopping open house fundraiser

Officer Reports

1. COB/Parliamentarian – Julie:

- Thank you to Sue Beattie for standing in for her in her absences.(The plant was a campanula plant for everyone that wanted to know what the pretty plant was)
- Thank you to Louise and Elaine for the terrific job they did this year. They each received engraved desk sets, flowers and ‘Julie cookies’ from the chapters

2. Treasurer: Sue Beattie –

- Current checkbook balance \$4,173.87
- M/M to accept treasurer’s report by Kathy Simmons 2nd by Simon Curry – motion passed
- Eileen Murray – We need a state fundraiser to keep our treasury balance up. Ideas voiced:
- Raffle at air show?
 - Simon– allow advertising on our website? Check w/National on their experience– Julie
- Insurance: One chapter is outstanding on D&O insurance (as well as charter fee).

May State Meeting Minutes continued

- Send Quarterly donations report detailing both \$ and hours. Include recipient organization, Service Area (Buckets of Sunshine e.g.) Monetary donation or cash equivalency and total # of service hours.
 - Community Reinvestment Act (CRA) requires banks to give back to community. Be sure your chapter applies to your local banks. Use letterhead; include name purpose of request and amount requested.
 - Support your state store! Great ideas for local awards. Mugs, pens, sweatshirts, t-shirts
3. Secretary: Kathy Simmons. February minutes distributed. Motion to accept – Jerry Sullivan, Chelmsford, 2nd by Eileen Murray, Mansfield. passed
- Request that those giving reports give written copy to secretary to help keep minutes accurate
4. External Foundation – Domestic Violence: Marcia Allison. Thank you to all the chapters who participated in domestic violence awareness and service projects. There were educational events fundraising projects and donations to local organizations & shelters. Be proud of your efforts, they have been reported and will be recognized at National Convention. I hope that you will continue your good works next year with Chris Palomba as Prg. Mgr.
5. ID PM – Amy Morrison
- Certifications 4th Quarter – Team Building :5, Effec. Writing: 3, Leadership: 1
 - Certifications 3rd Quarter – FOW: 1, Chaplain: 5
 - Certifications YTD – Effec. Writing: 9, Chaplain: 26, Team Building: 37, Eff. Speaking: 23, Leadership: 28, Listening: 30 STEP III: 7
 - Total Certifications for MA WOT 184 Congratulations!
 - MSPCC News: Over the last three years chapter donations total \$2,371.65, not including state donations. Thank you! – all seven chapters donated over the three year period
6. Awards: Eileen Murray. Thank you for all your submissions.
- Remember – recognition for hard work is always appreciated! Be sure to let your members know they are your winners. Continue to use awards as a motivational tool.
 - Will pass on a few suggestions received from the judges to streamline forms ..
 - Elaine Tallini has stepped up for Award Prg. Mgr. for 2008–2009
7. Public Relations: by Kathy Simmons for Becky Fleming – If you chapter has made a donation to the national Buckets of Sunshine recipient, Dorothy Day House, please let Becky know. It is not too late to make a donation to this worthy cause and THANK YOU to everyone that has donated already! National Buckets of Sunshine – Dorothy Day Hospitality House*: "People Helping People" – provides short-term live-in situation for people who are homeless or in personal crises and need shelter & food. Donations needed include: food & coffee, alarm clocks, twin size sheets/towels, paper products, detergents, money for expenses. The shelter is located in Rochester, Minnesota. Please consider making a donation to this worthy cause and please complete the Buckets of Sunshine form
- 10 Newsletter: by Louise to Judy Romero – Thank you for a Great Job!
- Request by Iva Mooney for each chapter to send her copies of their newsletters
 - Simon reported that newsletters can be posted to the Bulletin Board (password protected to protect names and numbers printed in your chapter newsletters)
- 11 Historian: Dee– Position still open. Relatively easy but important position and LOTS of Fun job keeping the scrapbooks
- PLEASE SUBMIT materials for the scrapbooks! THIS IS OUR HISTORY!

May State Meeting Minutes continued

12 Fellowship Director – Wally Woodard – Wally request you send a list of birthdays in your chapter so that he may send out cards.

13 Webmaster: Simon Curry– Quiet 4th quarter updating 2 chapters websites with reports and event notifications.

- Need new chapter officers & email address to set up match to public email addresses
- It would be great if each chapter had a designated contact for the webmaster
- Lots of hits on every chapters site since inception: Bellingham– 365, Chelmsford– 4714, Easton – 1325, Gr. Attleboro – 803, Mansfield – 586, Ma WOT – 9294
- NEED NEW AND CREATIVE MATERIALS TO KEEP SITES UPDATED

ELECTIONS: Slate as presented by Julie Hutchinson, Elections Chairperson:

President: Louise Orum, C.O.B.: Elaine Tallini, Secretary: Kathy Simmons, Membership PM: Julie Hutchinson, External Charity: Chris Palomba, Internal (MSPCC): Sue Beattie, ID PM: Amy Morrison, Awards PM: Elaine Tallini, Newsletter Editor: Becky Fleming, Historian: Paula Hickey, Fellowship PM: Wally Woodard, Webmaster: Simon Curry.

- Open Positions: Treasurer, Programming VP and Public Relations
- Secretary cast one vote for the slate as presented.

INSTALLATIONS:

- As COB, Julie installed Louise as incoming President and Louise installed new board in a candlelight ceremony.

Lunch Break 11:45 Farmer's Almanac donated by the editor at a volunteer luncheon were given to all with bookmarks made by Chelmsford. Door prize Drawings were held with recipients receiving 20 yr shirts, Farmers Almanac Calendars, and a Julie Quilt (won by first timer Dee Miller)

Lunch: Was a wonderful buffet featuring salad, vegetable lasagna, meatballs and rolls, a delicious dessert table featuring a beautifully decorated sheetcake cake .

Chelmsford raffle of flower arrangement present and future was won by Helen Cloutier.

4th Quarter Awards were announced. (See end of minutes)

Georgetown Report– No report

Mansfield Report – by Chris P. for Eileen McGowan –Eileen ran a successful M Night and signed 3 new members! Our Casino night was a great success raising over \$5000. 40 members and their significant others attended our Progressive Dinner. It was amazing to see the town come together and enjoy Three Cups of Tea. Our year end banquet was held at Bertucci's with a rededication of our chapter for our 25th anniversary!

Norton Report: by Barbara Wefers for Marie Tucker –Norton's goals this year were to have exciting programs, increase membership, give to community , meet new friends and have fun. Ran programs and services like Jeopardy golf lessons, Identity Theft, an auction, ornament swap, spreading mulch, donating food, toys and clothes, long term healthcare, home heating, cleaning up the park and MSPCC. Norton ended the year with 25 members including one new member.

May State Meeting Minutes continued

Year End Awards Announced.

President's comments: Louise – New Theme for 2008–2009 Women of Today Give from the Heart. Garden Bucks will turn into Heart Bucks. Gifts were given to the new officers for stepping up.

Winter Convention 2009 – Eileen Murray and Beverly Barry will chair. Discussion:

- Need more members to attend to break even.
- Were 5 short for the luncheon which created the shortfall

Year End Convention 2008 – Rochester, MN June 12–15 – Louise, Marcia and Kathy will be attending. We have a variety of different items for the sharing tables.

Benediction: Walter Woodard

Adjourned: 1:53 PM

Respectfully Submitted by Kathy Simmons

AWARDS

4th Quarter

Outstanding Rookie –	Joanne DeBaggis, Greater Attleboro
Outstanding Member of Today –	Trish Downey, Mansfield
Outstanding Officer –	Corren Collura, Mansfield
Carrie Lutz Spirit Award –	Dawn Schilke, Bellingham

Year End

Outstanding Rookie –	Faye Ballou, Greater Attleboro
Outstanding Member of Today –	Denise O'Leary, Norton
Outstanding Officer –	Anne Jasinski, Mansfield
Unsung Hero –	Carol Shachat, Mansfield
Carrie Lutz Spirit Award –	Beverly Barry, Chelmsford

4th Quarter Garden Awards

Ann Lally	Easton	Cathy Hellard	Mansfield
Linda Sturzenacker	Easton	Laura Humphrey	Mansfield
Jennifer Toone Campanella	Easton	Mary Joyce	Mansfield
Peggy Flynn	Easton		
		Barbara Wefers	Norton
Faye Ballou	Greater Attleboro	Denise O'Leary	Norton
Beverly Brooks	Greater Attleboro	Michelle Brunault	Norton
Joanne DeBaggis	Greater Attleboro	Louise Poulin	Norton
Monique Johnson	Greater Attleboro	Kathy Nelson	Norton



Please join us as we share our adventures, achievements and ideas!

When: Saturday November 1st, 2008

Where: American Legion Post #217 John Edward Mc Neill Post
44 South Street (Route 1A) Plainville, MA 02762.

Time: Registration and Credentials 9:30 am
Meeting 10:00 am -3:00 pm (approximate ending time)

Cost: \$15 - prepaid with registration form below
postmarked by October 20th

Please contact: Louise Orum lro2@netzero.net or Elaine Tallini etallini@comcast.net
with any questions.

**continental breakfast w/coffee/tea will be available @ 9:30 am
lunch will be served @ 12:30 pm**

Name:	
Chapter:	
e-mail/phone:	
Mail to: Greater Attleboro Women of Today P. O. Box 2791 Attleboro Falls, MA 02763	



Women of Today Give From The Massachusetts Women of Today Incentive

This year, all MAWT Chapter Members will have a unique and fun opportunity to earn points by completing tasks to claim prizes. Here's how it works: use the time frames from state meeting to state meeting (May to Nov, Nov to Feb & Feb to May) – complete as many items as possible on the form below, add up the points and submit to Louise prior to or on the morning of the state meeting. At the state meeting, your points will be traded in for WOT Dollars (Heart Bucks), which can be used at that meeting or future meetings to bid on fabulous prizes – Heart Bucks are good till May 2009.

Board Member's Name: _____

For which State Meeting is this being submitted? _____

- 1) **Make a visit to another chapter (add 1 point for each chapter visit)** _____
 - 2) **Create a theme for your office (Nov only)** _____
 - 3) **Develop goals and submit to state president (Nov only)** _____
 - 4) **Receive training from your predecessor (Nov only)** _____
 - 5) **Provide training in your area to your chapter counterpart
(add 1 point for each person, chapter trained) (Nov only)** _____
 - 6) **Make contact with your chapter counterparts (email or other)
(add 1 point for each time you contacted the chapter)** _____
 - 7) **Make contact with your national/state counterpart
(add 1 point for each time)** _____
 - 8) **Submit a written /email report to the state president
(add 1 point for each time)** _____
 - 9) **Submit an article to "The Calliope" or another chapters' newsletter
(add 1 point for each article)** _____
 - 10) **Participate in a state and/or national competition
(effective writing, effective speaking, STEP, project recognition, FOW)** _____
 - 11) **Bring in a new member and/or guest to a chapter/state meeting** _____
 - 12) **Certify in an area of ID (1 point for each area completed – 8 total)** _____
 - 13) **Attend an MAWT General Membership and/or USWT meeting** _____
 - 14) **If this is your first state meeting – you get 5 bonus points** _____
- TOTAL:** _____

Massachusetts Women of Today
State Award Nomination Form
2008– 2009



Criteria for Nominations:

Any member of the Massachusetts Women of Today may nominate another member for the “Heart of Gold” award. Nominees should exemplify the following: a member who goes above & beyond to assist their local chapter, state, community and/or Women of Today sister(s) in one or more projects for the quarter. In doing so, they are growing into a strong individual and a valuable member of the community.

Please provide the following information about the person you would like to nominate:

Name: _____

Chapter: _____

Name of person making this nomination: _____

Briefly describe how the nominee exemplifies the theme “Women of Today Give from the Heart” and provide specific examples.

Nominations will be accepted throughout the year (May 1, 2008 – April 30, 2009). Awards will be given out at the November, February and May State Meetings.

Nominations will be accepted up until one week prior to each of these State Meetings. Nomination forms will be accepted via e-mail or snail mail to:

Louise Orum 23C Benefit Street Attleboro, MA 02703 lro2@netzero.net 508-369-7207



**SAVE THE DATE:
Winter Convention
February 6 & 7, 2009
Marlboro, MA**

We're on the Web!

Visit us at:

www.mawt.org

Massachusetts Women of Today
496 Depot Street
South Easton, MA 02375

